

Ferguson

SERVICE BULLETIN
Tractor Serial Numbers

Ferguson

Every week we get people ringing us up at Massey Ferguson making enquires of the age of their tractor. We have listed below the serial numbers and year of manufacture of the TE-20, FE-35 and the MF-65 (MF-765) taken from Service Bulletins of the time, we have also included illustrations showing the location of the serial number plates.

The year of manufacture can only be determined from from the serial number plate. No records were kept relating the engine serial number to the tractor serial number.

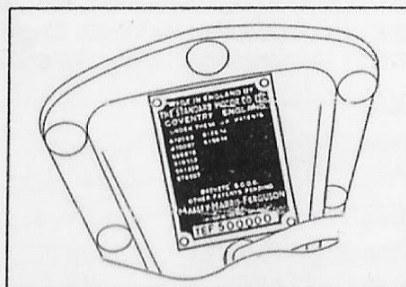
Extract from Service Bulletin No. H(56) Item A. 30th September 1956

TE-20 TRACTOR SERIAL NUMBERS

Advice

We are frequently receiving queries from Distributors and individual owners regarding the age of particular tractors. No doubt our Distributors are often asked for similar information. We are, therefore, listing below the serial number range for the TE.20 tractor series for each calendar year of manufacture.

| | From Serial Number | Tractor Serial Numbers |
|------|--------------------|------------------------|
| 1946 | | 1 - 315 |
| 1947 | " " " | 316 - 20894 |
| 1948 | " " " | 20895 - 77772 |
| 1949 | " " " | 77773 - 116461 |
| 1950 | " " " | 116462 - 167836 |
| 1951 | " " " | 167837 - 241335 |
| 1952 | " " " | 241336 - 310779 |
| 1953 | " " " | 310780 - 367998 |
| 1954 | " " " | 367999 - 428092 |
| 1955 | " " " | 428093 - 488578 |
| 1956 | " " " | 488579 - 517651 |



Extract from Service Bulletin No. H(56) Item C. 30th September 1956

FE-35 TRACTOR

SERIAL NUMBERING SYSTEMS FOR TRACTORS AND ENGINES

Advice

The method of identifying the type of FE-35 Tractor and Engine will be basically to that used previously for TE-20 types. Each FE-35 Tractor and Engine will be allocated a Serial Number with a prefix and suffix letters which will indicate the particulars relevant to that type.

Tractor Serial Numbers

The Serial Numbers for the Tractors will start at 1001 and each number will have usually three prefix letters. However, as and when alternative refinements become available the number of prefix letters will be extended as necessary to a fourth and perhaps a fifth letter.

FE35 Serial Numbers (continued)

The existing prefixes are as follows:-

Chassis

| First Letter | Prefix Letter |
|-----------------------------------|---------------|
| Normal Width (Agricultural) | S |
| Vineyard | V |
| Industrial | J |
| High Clearance | C |

Engine

| Second Letter | Prefix Letter |
|--|---------------|
| Petrol (6:1 compression ratio) | G |
| High Altitude Petrol (6.6:1 compression ratio) | H |
| Diesel - Standard 23c | D |
| Vaporising Oil (TVO) | K |
| Lamp Oil (Paraffin) | L |
| Diesel - Perkins A3.152 | N |
| Gas engine (Butane) | B |

Clutch

| Third Letter | Prefix letter |
|--------------------------------------|---------------|
| Single Clutch (Standard model) | F |
| Dual Clutch (De-lux Model) | M |

Example

The Serial Number SDM1076 would indicate that Tractor Serial No. was a Standard Model with a Diesel Engine and Dual Clutch, whereas JGF1088 was an Industrial Tractor with Petrol engine (6:1 CR) and single clutch.

Engine Numbers

Each type of engine will start at serial No. 1 and will have:-

- Two prefix letters to indicate the engine type.
- The suffix letter "E" to denote it is an engine number.
- An additional suffix letter to indicate the type of clutch

In the case of Petrol Engines only, the first letter following the suffix "E" will indicate a normal or high compression ratio, therefore, these engines will have three suffix letters whereas all other engines will have two.

The complete range of Prefix and Suffixes to cover the engine units is as follows:-

87 mm Petrol

| | |
|--|-----------|
| 6 : 1 Compression Ratio with Single Clutch | SF----ELS |
| 6 : 1 Compression Ratio with Dual Clutch | SF----ELD |
| 6.6 : 1 Compression Ratio with Single Clutch | SF----EHS |
| 6.6 : 1 Compression Ratio with Dual Clutch | SF----EHD |

87 mm V.O.

| | |
|--------------------------|----------|
| With Single Clutch | SG----ES |
| With Dual Clutch | SG----ED |

87 mm L.O.

| | |
|--------------------------|----------|
| With Single Clutch | SH----ES |
| With Dual Clutch | SH----ED |

Diesel 23c (3.5/16" bore)

| | |
|--------------------------|----------|
| With Single Clutch | SJ----ES |
| With Dual Clutch | SJ----ED |

Example

The engine No. SF1234EHD would indicate that Engine No. 1234 would have an 87 mm Petrol engine with a 6.6 : 1 Compression Ratio and a Dual Clutch.

Spare Engines

No Engine numbers will be duplicated except in the case of engines for Spares, when, as in the past, the Suffix "S" will be added for identification purposes.

Example: SF1234EHD/S

FE-35, MF-35 & MF35X TRACTOR SERIAL NUMBERS

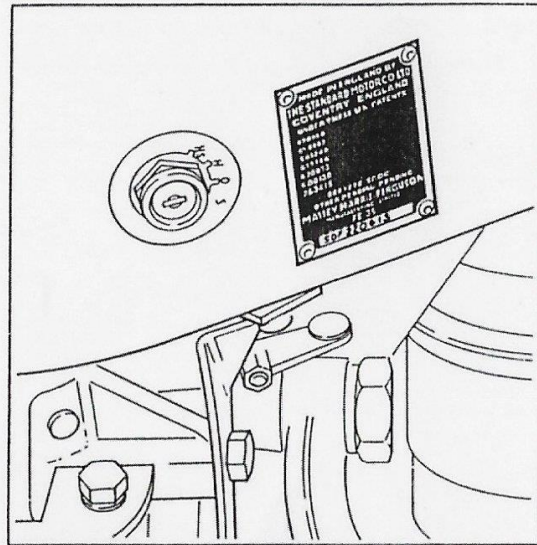
| | | |
|------|--------------------|-----------------|
| 1956 | From Serial Number | 1001 - 9225 |
| 1957 | " " " | 9226 - 79552 |
| 1958 | " " " | 79553 - 125067 |
| 1959 | " " " | 125068 - 171470 |
| 1960 | " " " | 171471 - 220613 |
| 1961 | " " " | 220614 - 267527 |
| 1962 | " " " | 267528 - 307230 |
| 1963 | " " " | 307231 - 352254 |
| 1964 | " " " | 352255 - 388382 |

Serial number information

FE-35 Grey and Gold tractor built up to serial number 74655 - 1957

MF-35 First tractor built with Perkins A3.152 indirect injection engine from serial number 166596 - 1959

MF-35X First built at serial number 302413 - 1962



Extract from Service Bulletin No. H(58) Item A. 30th April 1958

MF-65 TRACTOR SERIAL NUMBERING SYSTEM

Advice

The serial Numbers of MF-65 Tractors will commence at 500,001. It is generally felt that the use of a separate 500,000 series of Serial Numbers will facilitate immediate and unmistakable identification of Tractor type.

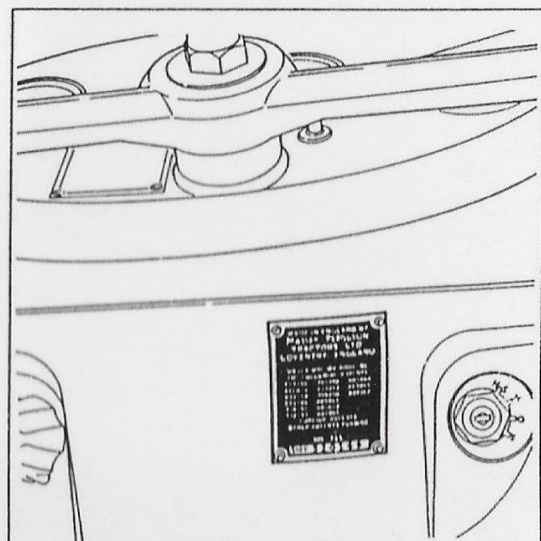
Prefix Code letters will denote chassis, engine and intrinsic component variations in a similar manner as is used on the MF-35 Tractor as follows:-

| | Prefix Letter |
|---|---------------|
| <u>Chassis:</u> Standard Clearance 4-wheel | S |
| <u>Engine:</u> Perkins Engine (P4/192Y in this instant) | N |
| <u>Other Variations:</u> Differential lock | Y |

On this basis a standard clearance 4-wheel MF-65 Tractor, less differential lock, would be commissioned SN.500001 upwards and a standard clearance 4-wheel MF-65 Tractor, with differential lock, would be commissioned SNY.500001 upwards.

MF-65 TRACTOR SERIAL NUMBERS

| | | |
|------|--------------------|-----------------|
| 1958 | From Serial Number | 500001 - 510450 |
| 1959 | " " " | 510451 - 520568 |
| 1960 | " " " | 520569 - 533179 |
| 1961 | " " " | 533180 - 551732 |
| 1962 | " " " | 551733 - 572324 |
| 1963 | " " " | 572325 - 593027 |
| 1964 | " " " | 593028 - 614024 |



John Walker
 Technical Publications Manager
 Massey Ferguson